

# Welcome to the Grunin Center!



When we arrive at the theater, we will park the car in the theater's parking lot.



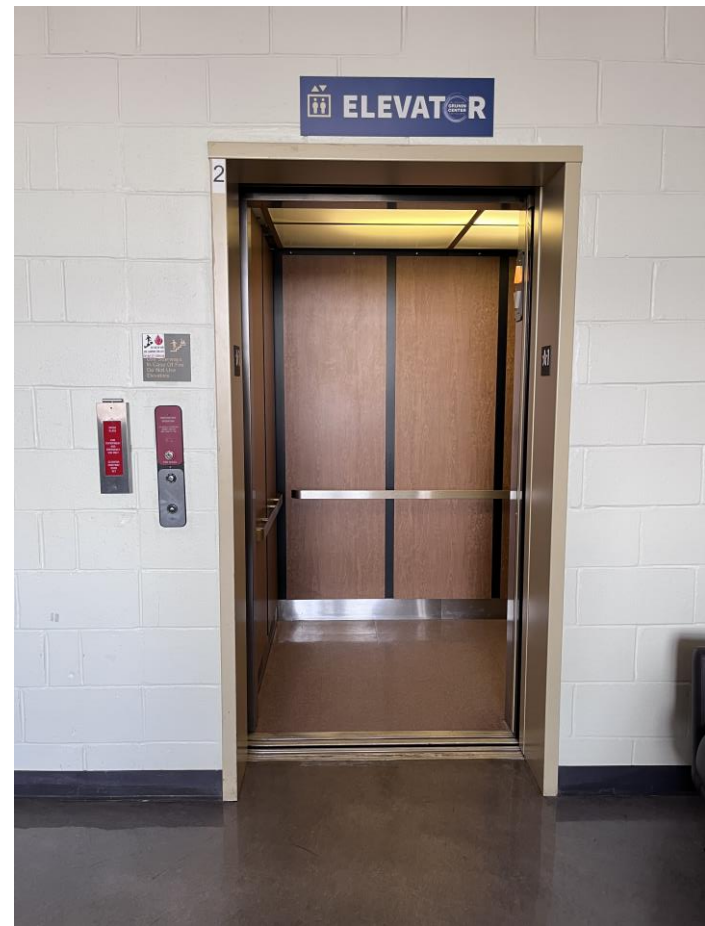
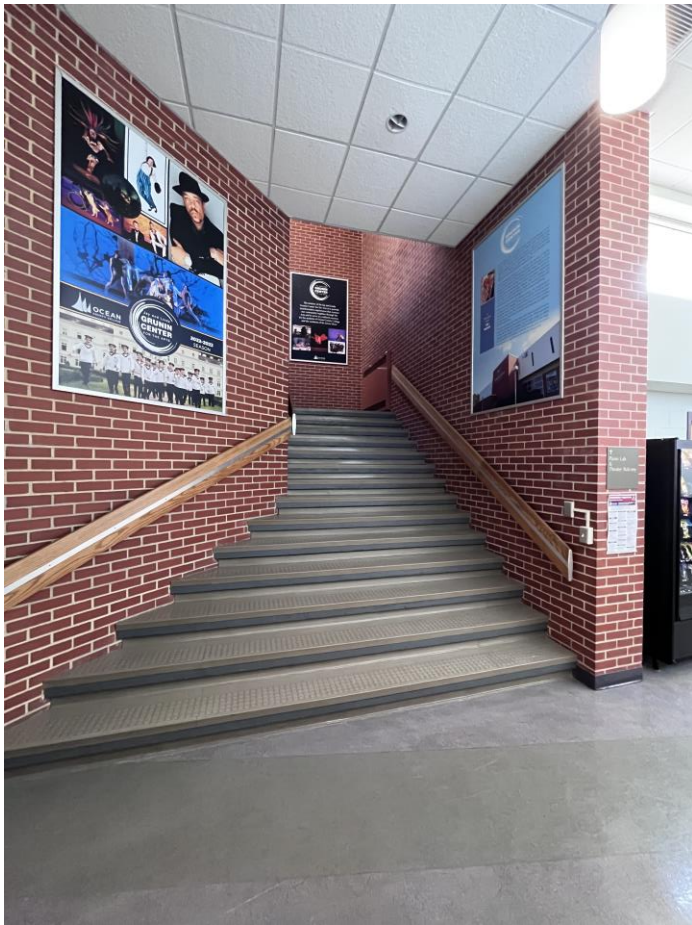
When we arrive at the theater, we will go through the front doors and enter the lobby. There may be other people in the lobby who are also waiting to see the show.



I will use a ticket to get into the show. Someone will scan or look at my ticket when I arrive. My family can buy tickets at the Box Office.



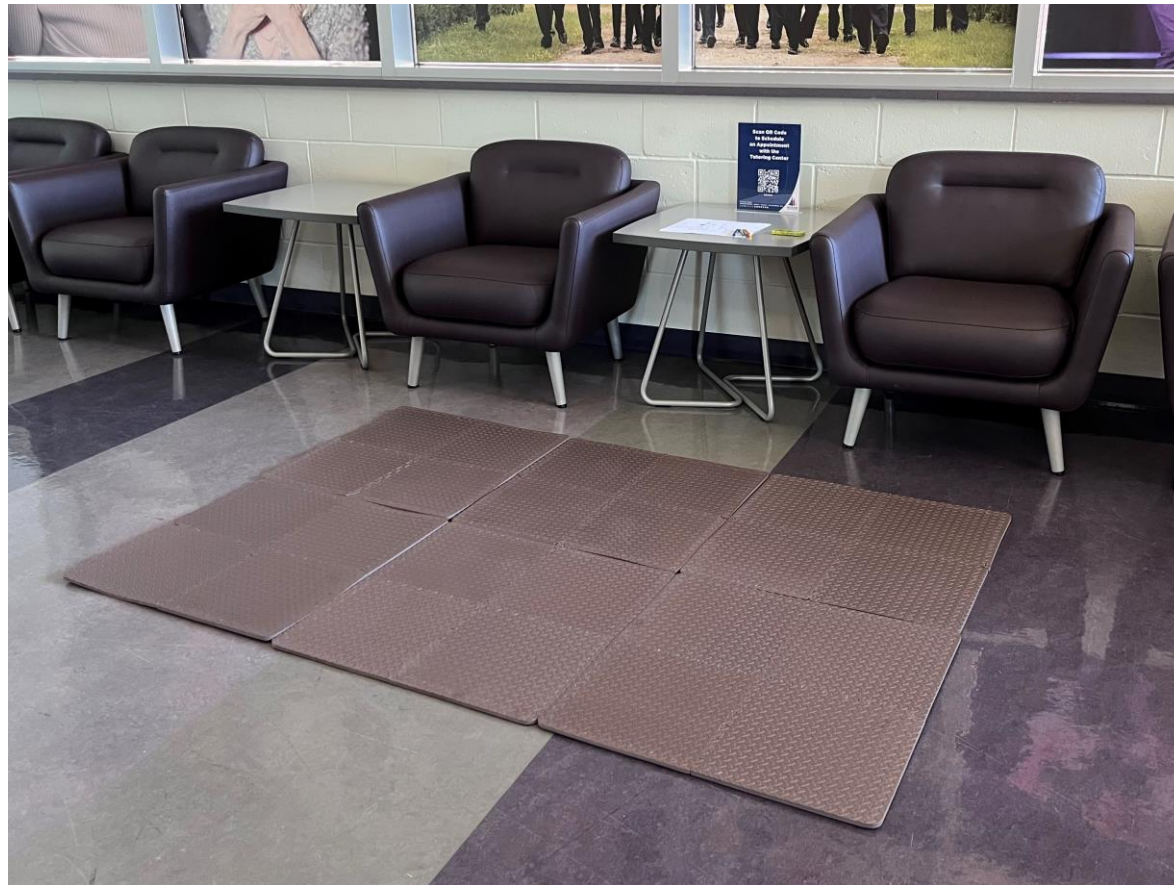
The theater has two levels. If my ticket is for upstairs in the mezzanine, I will take the stairs or elevator to go up.



There are bathrooms on both levels of the theater.  
I can use them before, during, or after the show.



There is a Quiet Area that I can visit if I need to take a break during the show.



This is the entrance into the theater where I will see the show. An usher will look at my ticket and help me find my seat.





This is what the theater looks like on the inside.



The show will not start as soon as you sit down because people arrive at different times. Sometimes you will have to wait for the show to begin.

Before the show begins, the lights in the room will get dim. The lights will not go out completely, but it will be darker than before.

The show you are going to see is called  
“Mutts Gone Nuts”



The people on the stage are excited to be performing for you. When the show is over, the whole audience will clap for them as a way to say “thank you.”

**This might be a little loud.**



The lights will get brighter again when the show is over and you will leave the theater. We hope you had a great time and will come and see us again at the Grunin Center!